



TRILOGY grove

Plan 1791 • 1,791 square feet



ELEVATION A



ELEVATION B



ELEVATION C



TEXAS-HOMES.COM

Actual room dimensions may vary. See a sales counselor for more information. REV. 07.26.24



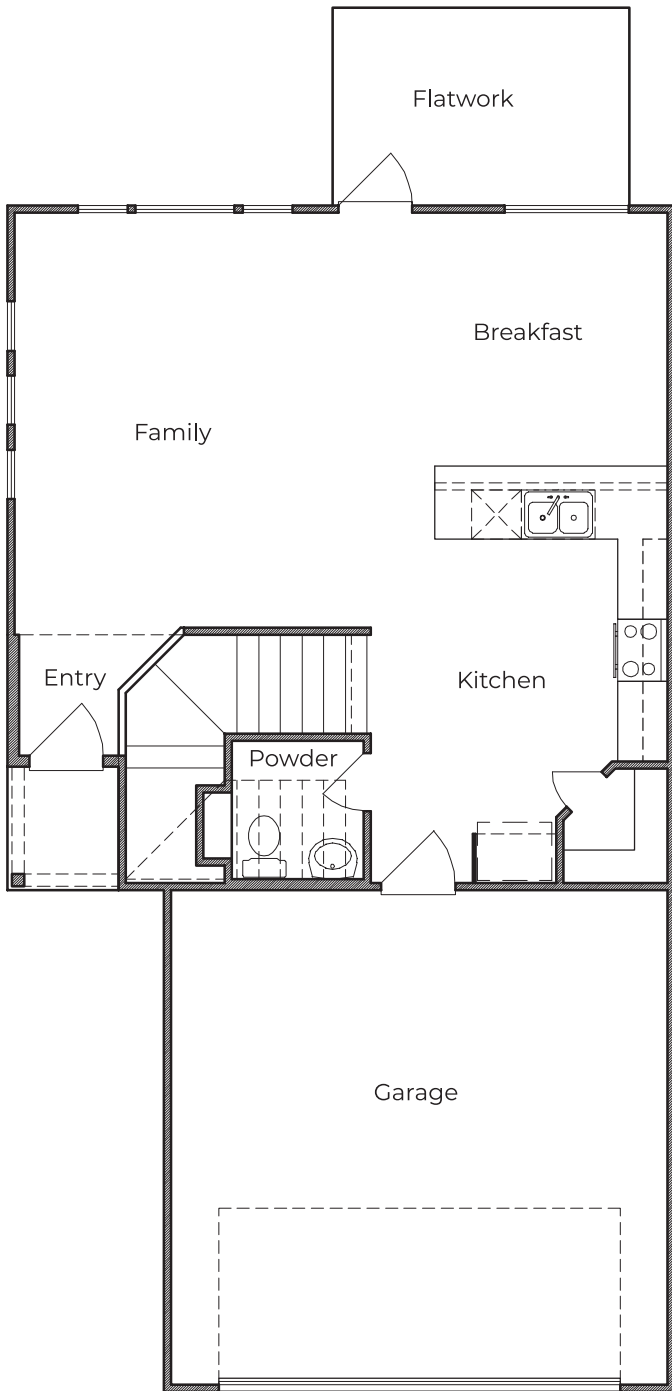
TEXAS HOMES

Texas Built • Texas Owned • Texas Proud

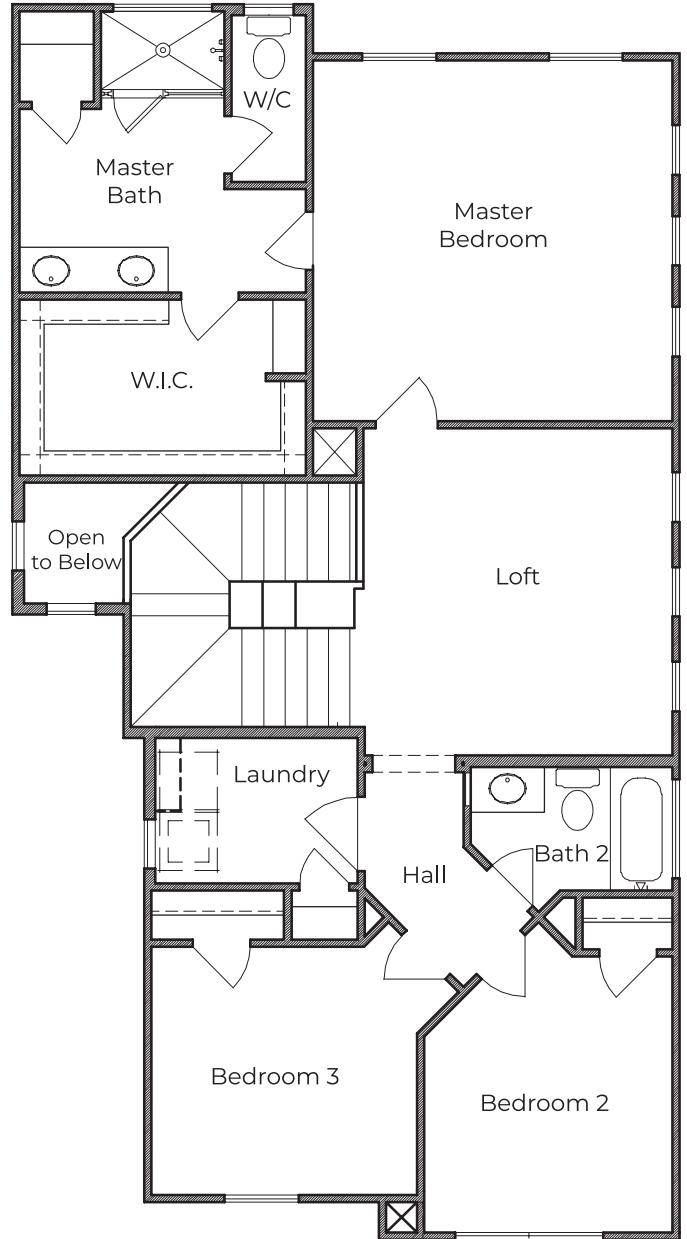


TRILOGY grove

Plan 1791 • 1,791 square feet



FIRST FLOOR



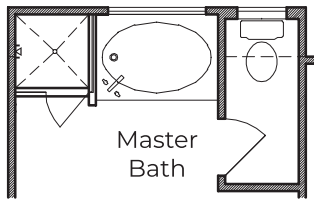
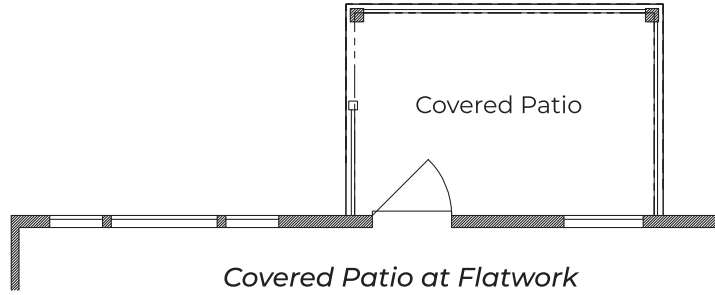
SECOND FLOOR



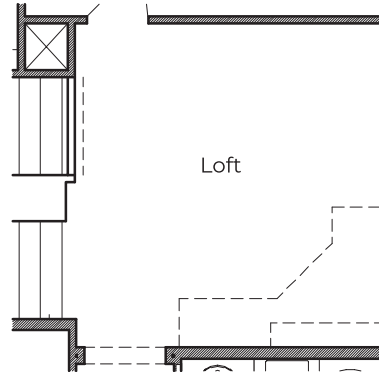


TRILOGY grove

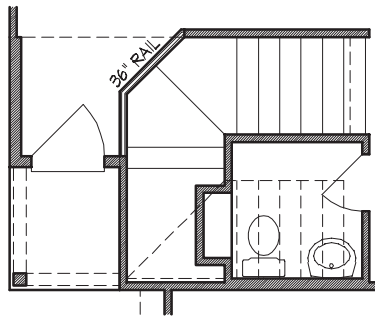
Plan 1791 • OPTIONS



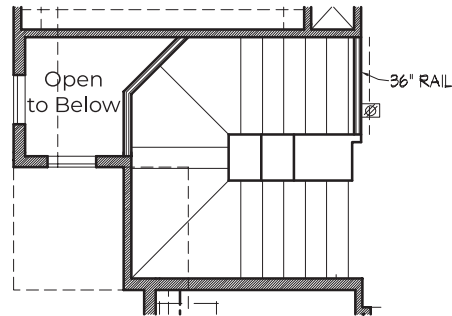
*36" x 36" Shower
at Master Bath*



Cabinets at Loft



FIRST FLOOR



SECOND FLOOR

36" Railing at Stairs



TEXAS-HOMES.COM

Actual room dimensions may vary. See a sales counselor for more information. REV. 07.26.24



TEXAS HOMES

Texas Built • Texas Owned • Texas Proud