



# TRILOGY grove

Plan 1792 • 1,792 square feet



**ELEVATION A**



**ELEVATION B**



**ELEVATION C**



**TEXAS-HOMES.COM**

Actual room dimensions may vary. See a sales counselor for more information. REV. 02.13.24



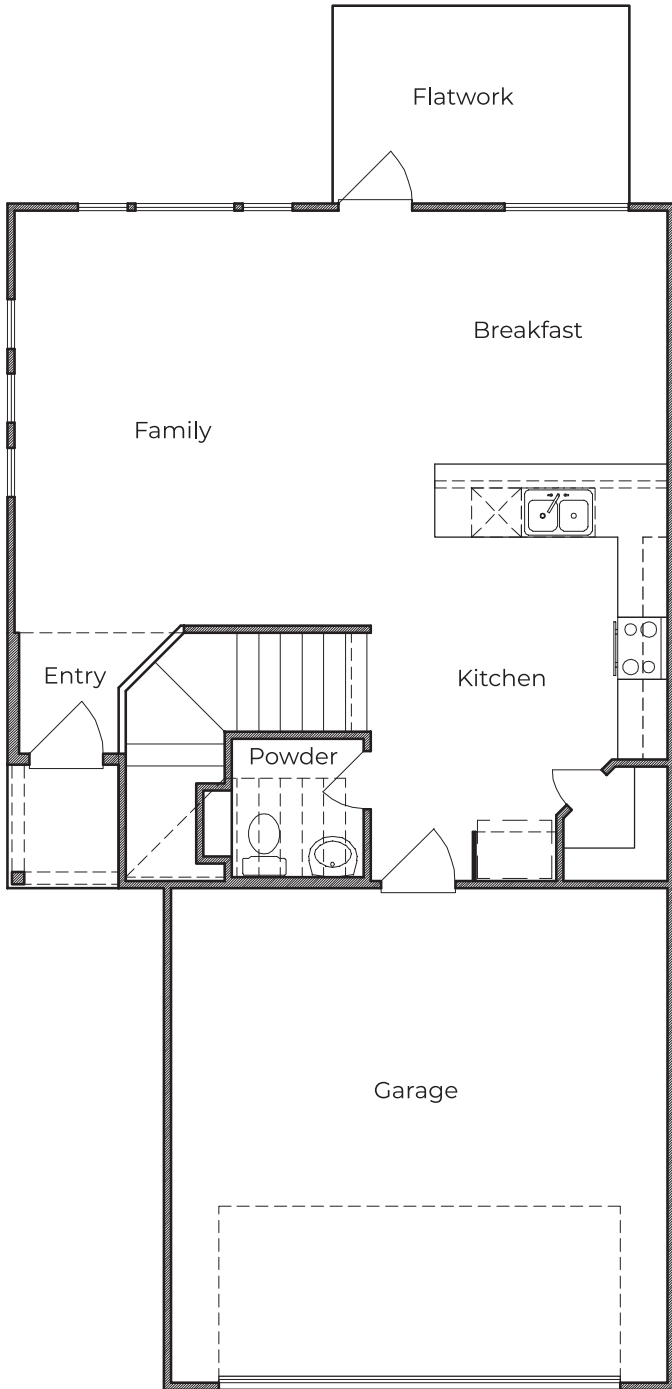
**TEXAS HOMES**

*Texas Built • Texas Owned • Texas Proud*

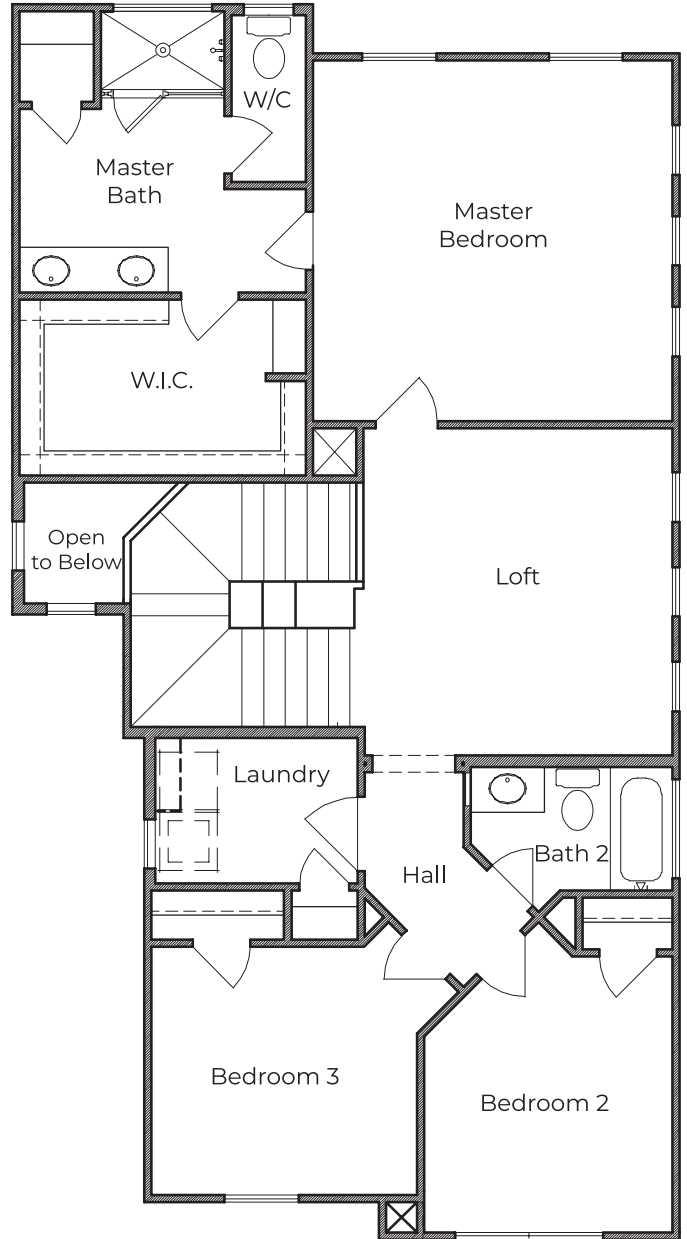


# TRILOGY grove

Plan 1792 • 1,792 square feet



FIRST FLOOR



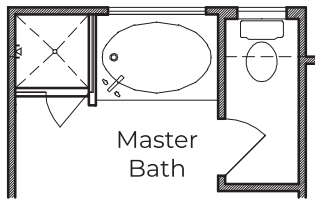
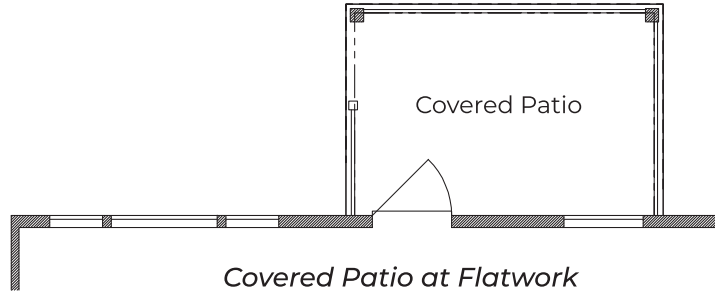
SECOND FLOOR



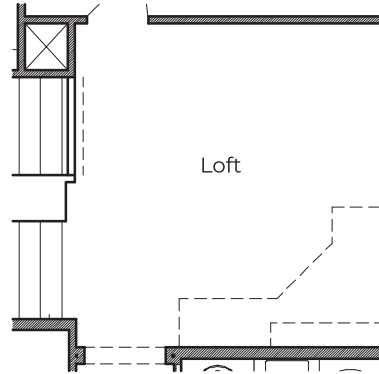


# TRILOGY grove

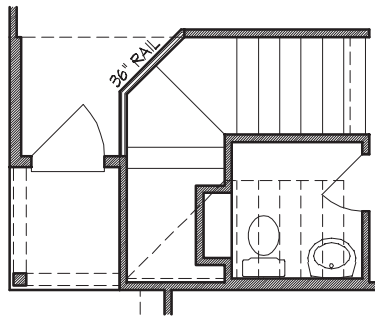
Plan 1792 • OPTIONS



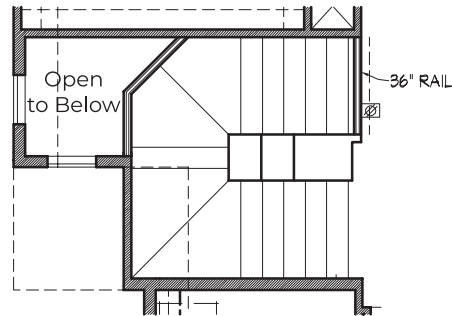
36" x 36" Shower  
at Master Bath



Cabinets at Loft



FIRST FLOOR



SECOND FLOOR

36" Railing at Stairs



TEXAS-HOMES.COM

Actual room dimensions may vary. See a sales counselor for more information. REV. 06.10.24



TEXAS HOMES

Texas Built • Texas Owned • Texas Proud