

Vistas of Sonoma

Bentley • 3,748 square feet



ELEVATION B



ELEVATION D



ELEVATION E



TEXAS-HOMES.COM

*These are artist renderings and actual elevation detailing are subject to change.
Refer to Sales Counselor and review actual blueprint. Rev. 11.05.20*

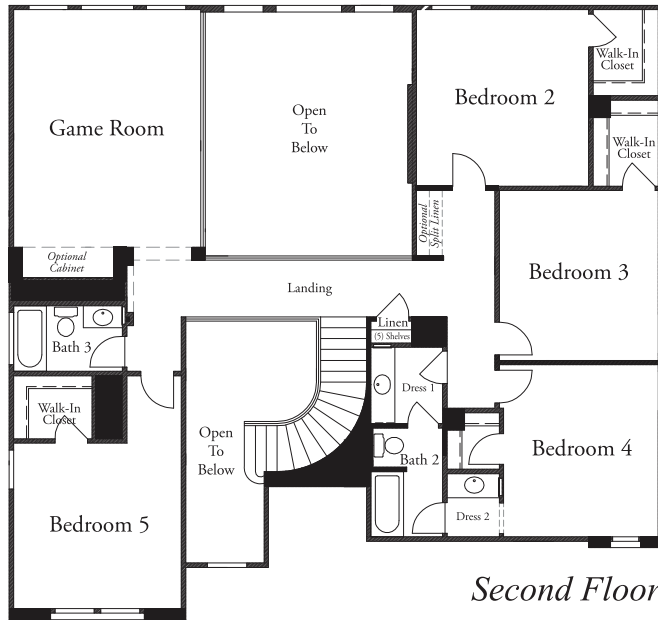


TEXAS HOMES

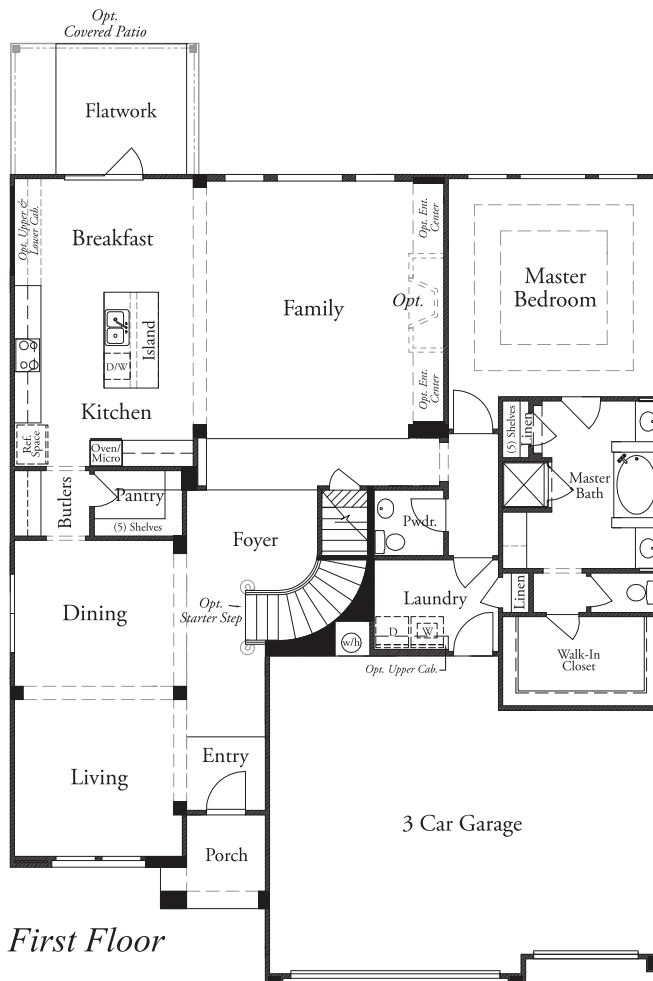
Texas Built • Texas Owned • Texas Proud

Vistas of Sonoma

Bentley • 3,748 square feet



Second Floor



First Floor



TEXAS HOMES

Texas Built • Texas Owned • Texas Proud

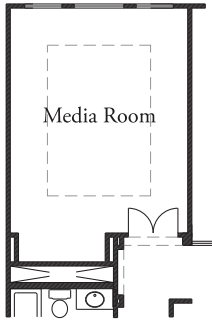


TEXAS-HOMES.COM

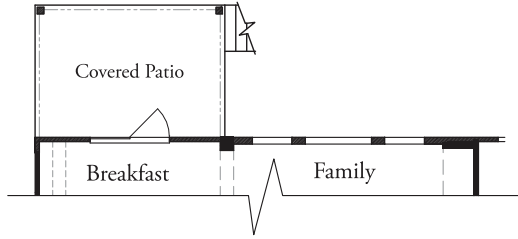
Actual room dimensions may vary. See a sales counselor for more information. Rev. 11.05.20

Vistas of Sonoma

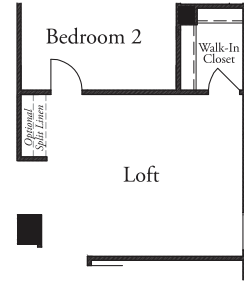
Bentley • Options



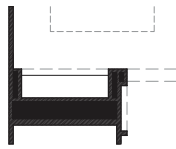
Optional Media Room at Game Room



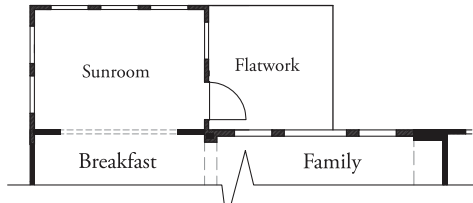
Optional Covered Patio



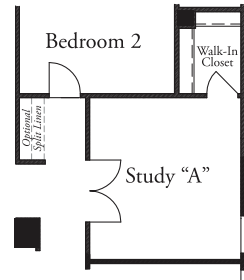
Optional Loft at Bedroom 3



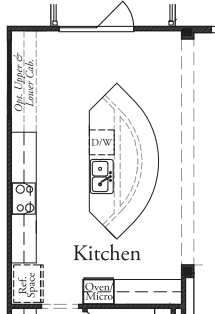
Optional Cabinet at Game Room



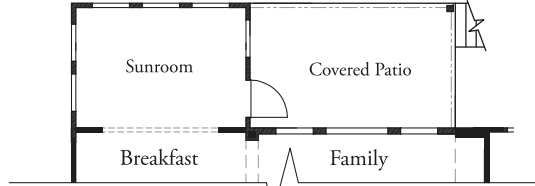
Optional Sunroom



Optional Study "A" at Bedroom 3



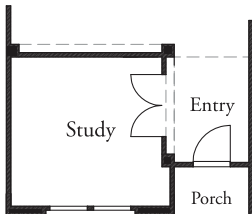
Optional Large Island at Kitchen



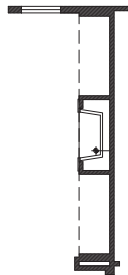
Optional Sunroom & Covered Patio



Optional Drop-In Tub with Mudset Shower at Master Bath



Optional Study at Living Room



Optional Fireplace at Family Room



Optional Starter Step



TEXAS-HOMES.COM

Actual room dimensions may vary. See a sales counselor for more information. Rev. 11.05.20



TEXAS HOMES

Texas Built • Texas Owned • Texas Proud